



BIOMEDICAL WASTE MANAGEMENT RULES 2016



BLUE IS GONE !!

RED IS ON !!!

3 BINS, 01 CONTAINER & 01 BOX

General
waste



Human
anatomical waste
Chemo drugs
Soiled waste
**Expired or
Discarded
Medicines, soiled
linen**



**Contaminated
Plastic Waste
(Recyclable)**



Waste sharps
including
Metals



**Glassware:
Broken or
discarded
and
contaminated
glass including
medicine vials
and ampoules**



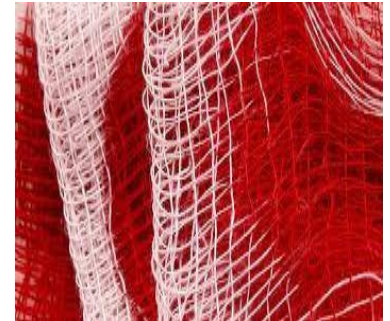


SCHEDULE I : YELLOW CATEGORY: SOILED WASTE

(a) Human Anatomical Waste: Human tissues, organs, body parts and fetus

(b) Animal Anatomical Waste :

(c) Soiled Waste: Items contaminated with blood, body fluids like dressings, plaster casts, cotton swabs and bags containing residual or discarded blood



Incineration or Plasma Pyrolysis or deep burial



(d) Expired or Discarded Medicines including antibiotics



DRUGS

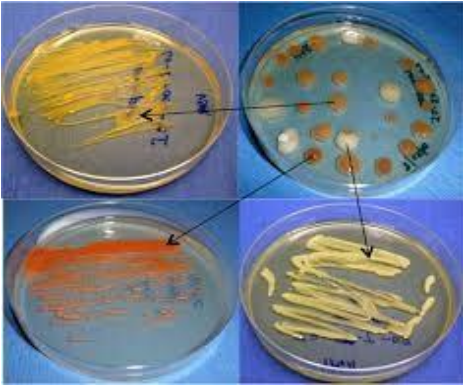
(d) **CYTOTOXIC DRUGS:** including all items contaminated with cytotoxic drugs along with glass or plastic ampoules, vials etc.



Common bio-medical waste treatment facility: Incineration



LABORATORY WASTES & LINEN



Microbiology, Biotechnology and other clinical laboratory waste: Laboratory cultures, stocks or specimens of microorganisms



Pre-treat to sterilize with nonchlorinated chemicals on-site as per NACO or World Health Organization

LINEN: linen, mattresses, contaminated with blood or body fluid.



CHEMICAL & LIQUID WASTES

(g) Chemical Waste:
Discarded disinfectants



Yellow coloured
containers or
non-chlorinated
plastic bags



Disposed of by incineration or
Plasma Pyrolysis or
Encapsulation in hazardous
waste treatment, storage and
disposal facility.

**(h) Chemical Liquid
Waste :**discarded
Formalin, liquid from
laboratories and floor
washings, cleaning, etc.



Separate
Collection system
leading to effluent
treatment system

**FORMALIN
POISON**



SCHEDULE 1- RED CATEGORY: PLASTICS RECYCLEBLE WASTE

(a) Wastes generated from tubing, bottles, intravenous tubes and sets, catheters, urine bags, syringes (without needles and *fixed needle syringes*) and gloves



catheters, urine bags, syringes (without needles and *fixed needle syringes*) and gloves



Autoclaving or micro-waving/hydroclaving followed by shredding or mutilation



SHARP CONTAINERS

Puncture proof, Tamper proof, Leak proof containers!!



SCHEDULE 1- WHITE



Waste sharps

Including Metals:

Needles, syringes with fixed needles, needles from needle tip cutter or burner, scalpels, blades,

This includes both used, discarded and contaminated metal sharps



Autoclaving or Dry Heat Sterilization followed by shredding or mutilation



SCHEDULE 1- CATEGORIES AND THEIR SEGREGATION, COLLECTION, TREATMENT, PROCESSING AND DISPOSAL OPTIONS

Glassware:

Broken or discarded and contaminated glass including medicine vials and ampoules except those contaminated with cytotoxic wastes & Metallic Body Implants



Disinfection (by soaking the washed glass waste after cleaning with detergent and Sodium Hypochlorite treatment) or through autoclaving or microwaving or hydro claving and then sent for recycling.



GENERAL WASTE IN BLACK



TAKE HOME MESSAGE....

YELLOW has blood, drugs and tissues dead,
Plastics;tubes and syringe now go in **RED**,
Sharps in Containers lockable & white,
Black is for garbage; BMW not by right,
Card boards shall carry bottles and Glasses,
All we need, are a few more classes!!



A hand is shown from the bottom right, palm up, holding a glowing, translucent sphere. The sphere is the central focus and contains the text "THANK YOU" in a bold, black, sans-serif font. The background is a plain, light gray gradient.

**THANK
YOU**